

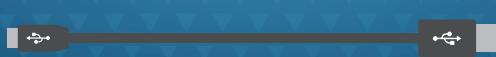
QUICK START GUIDE

FLIP 5

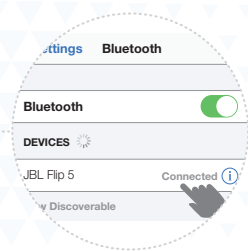
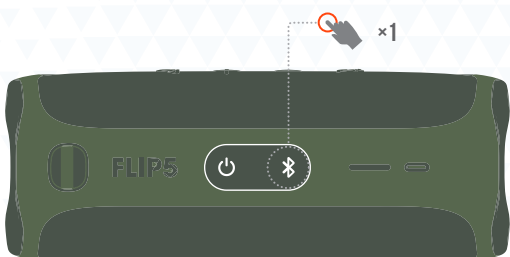


BC

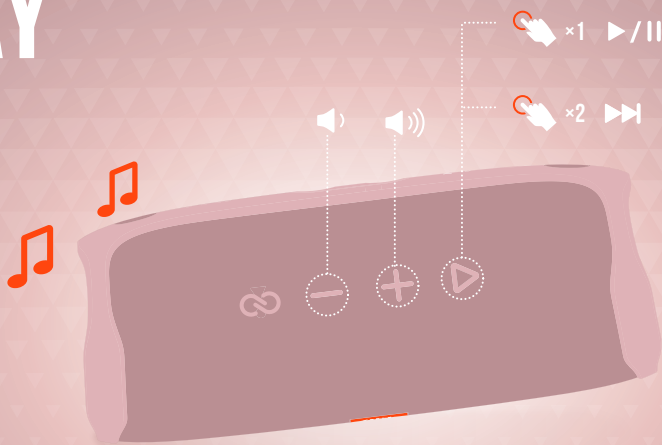
WHAT'S IN THE BOX



BLUETOOTH PAIRING



PLAY



PARTYBOOST

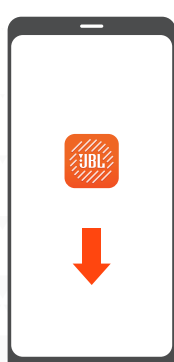
1.



2.



APP

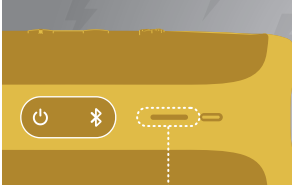


JBL CONNECT

USE THE JBL CONNECT APP FOR SPEAKER CONFIGURATION AND SOFTWARE UPGRADE.



CHARGING



USB



100% 50% 20%

WATERPROOF IPX7



30 MINS

1M

TECH SPEC

BLUETOOTH® VERSION:	4.2
SUPPORT:	A2DP V1.3, AVRCP V1.6
TRANSDUCER:	44 X 80MM
RATED POWER:	20W RMS
FREQUENCY RESPONSE:	65HZ – 20KHZ
SIGNAL-TO-NOISE RATIO:	> 80DB
BATTERY TYPE:	LITHIUM-ION POLYMER 17.28WH (EQUIVALENT TO 3.6V, 4800MAH)
BATTERY CHARGE TIME:	2.5 HOURS (5V/3A)
MUSIC PLAYTIME:	UP TO 12 HOURS (VARIES BY VOLUME LEVEL AND AUDIO CONTENT)
BLUETOOTH® TRANSMITTER POWER:	0 – 110DB
BLUETOOTH® TRANSMITTER FREQUENCY RANGE:	2.402 – 2.480GHZ
BLUETOOTH® TRANSMITTER MODULATION:	GFSK, π/4 DQPSK, 8DPSK
DIMENSION (W x D x H):	181 X 69 X 74MM
WEIGHT:	540G

